

# KHSAA Basketball - Game Box Score

## Breathitt County Lady Cats vs. Simon Kenton Lady Pioneers

**Date: 03/11/09 Time: 6:30 pm EST Site: Diddle Arena-Bowling Green, KY Attendance: N**

### Visitors: Simon Kenton Lady Pioneers

##	Name	P	FG	3 Pt	FT	PTS	ORB	DRB	TR	PF	AST	TO	BS	ST	MIN
10	* Sydni Wainscott		1/4	2/5	0/1	8	2	1	3	2	4	7	0	4	32:00
11	Aris Kuntz		0/0	0/0	0/0	0	0	0	0	0	0	0	0	0	DNP
15	Teresa Large		0/0	0/0	0/0	0	0	0	0	0	0	0	0	0	DNP
20	* Chelsea Tolliver		5/12	3/11	0/0	19	2	4	6	5	0	1	0	1	31:42
21	* Ali Ponzer		0/2	0/4	0/0	0	1	0	1	5	0	2	0	1	18:58
22	Natalie Wainscott		0/0	0/0	0/0	0	0	0	0	0	0	0	0	0	DNP
23	Hannah Stephenson		0/0	0/0	0/0	0	0	0	0	0	0	0	0	0	DNP
24	Olivia Bach		0/0	0/0	0/0	0	0	0	0	0	0	0	0	0	4:25
25	* Lyndsey Figgins		1/3	1/5	4/7	9	3	4	7	1	1	1	0	1	27:33
30	Kristin Pace		0/0	0/0	0/0	0	0	0	0	0	0	0	0	0	DNP
31	Caitlyn Figgins		0/0	0/0	0/0	0	0	0	0	0	0	0	0	1	2:03
32	Brionna Jones		0/0	0/0	0/0	0	0	0	0	0	0	0	0	0	DNP
33	* Kayla Smith		1/3	1/2	0/0	5	3	5	8	4	1	0	1	2	26:43
44	Nikki Brown		0/2	0/0	5/6	5	2	0	2	3	1	0	1	1	16:36
	Team						6	1	7						
	<b>Totals</b>		<b>8/26</b>	<b>7/27</b>	<b>9/14</b>	<b>46</b>	<b>19</b>	<b>15</b>	<b>34</b>	<b>20</b>	<b>7</b>	<b>11</b>	<b>2</b>	<b>11</b>	<b>160</b>
	<b>2 PT FG</b>		1st Half		3/15	20.0%	2nd Half		5/11	45.5%	Game	8/26		30.8%	
	<b>3 PT FG</b>		1st Half		2/15	13.3%	2nd Half		5/12	41.7%	Game	7/27		25.9%	
	<b>Free Throws</b>		1st Half		4/7	57.1%	2nd Half		5/7	71.4%	Game	9/14		64.3%	

### Home: Breathitt County Lady Cats

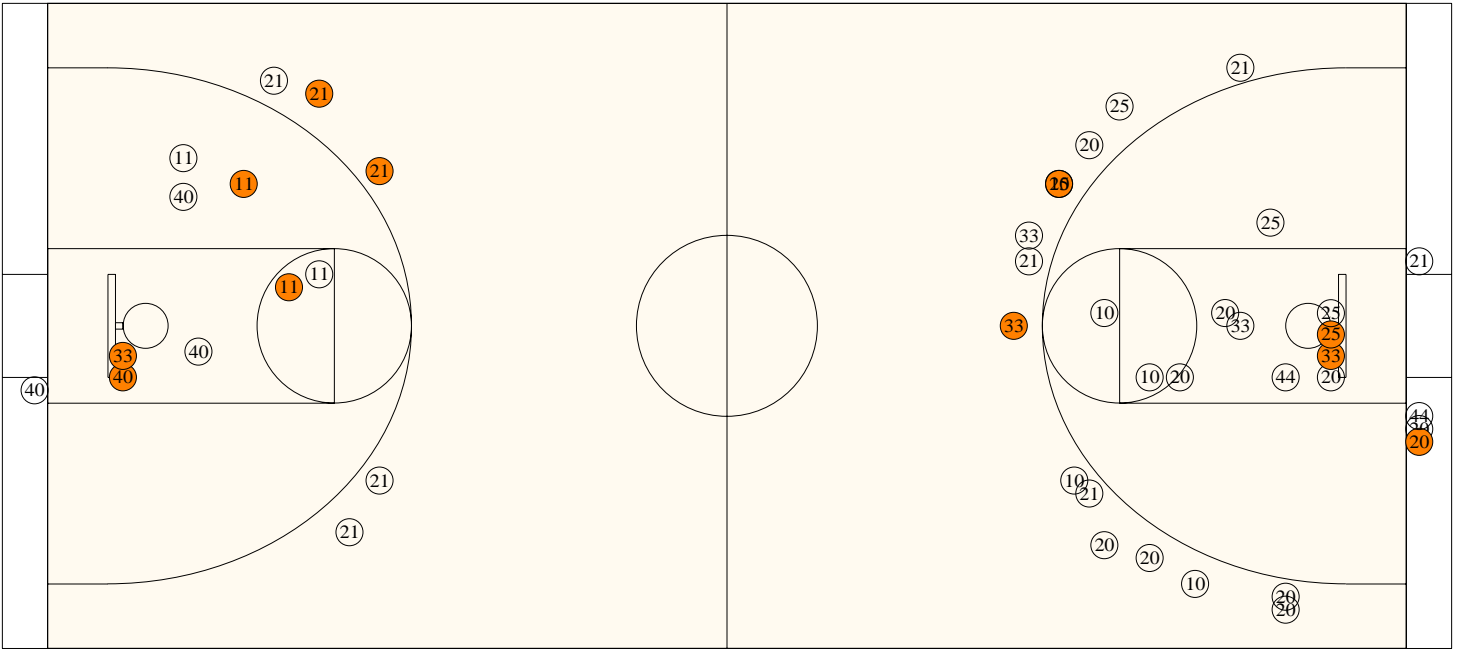
##	Name	P	FG	3 Pt	FT	PTS	ORB	DRB	TR	PF	AST	TO	BS	ST	MIN
4	Leslie Spencer		0/0	0/0	0/0	0	0	0	0	0	0	0	0	0	DNP
5	Ashley White		0/0	0/0	0/0	0	0	0	0	0	0	0	0	0	DNP
11	* Brittany Haddix		2/5	0/0	0/0	4	0	3	3	4	0	6	1	1	25:22
12	* Kendall Noble		1/4	0/0	9/16	11	6	6	12	3	6	6	2	3	32:00
21	* Brianna Deaton		0/1	3/11	0/0	9	1	0	1	0	0	3	0	0	24:33
23	Kristin Bowen		0/0	0/2	0/2	0	0	0	0	0	0	1	1	0	15:10
30	* Brittany Hardin		0/0	0/0	0/0	0	1	3	4	2	1	3	0	1	16:46
32	Courtney Fugate		0/0	0/0	0/0	0	0	0	0	0	0	0	0	0	DNP
33	* Eden Keeton		4/6	0/0	0/1	8	3	5	8	3	0	0	3	0	31:12
34	Morgan Robinson		0/0	0/0	0/0	0	0	0	0	0	0	0	0	0	DNP
40	Victoria Shouse		2/7	0/1	1/2	5	4	4	8	1	1	2	0	0	14:57
42	Emily White		0/0	0/0	0/0	0	0	0	0	0	0	0	0	0	DNP
53	Katlyn Turner		0/0	0/0	0/0	0	0	0	0	0	0	0	0	0	DNP
54	Amber Gross		0/0	0/0	0/0	0	0	0	0	0	0	0	0	0	DNP
	Team						1	2	3						
	<b>Totals</b>		<b>9/23</b>	<b>3/14</b>	<b>10/21</b>	<b>37</b>	<b>16</b>	<b>23</b>	<b>39</b>	<b>13</b>	<b>8</b>	<b>21</b>	<b>7</b>	<b>5</b>	<b>160</b>
	<b>2 PT FG</b>		1st Half		4/9	44.4%	2nd Half		5/14	35.7%	Game	9/23		39.1%	
	<b>3 PT FG</b>		1st Half		2/5	40.0%	2nd Half		1/9	11.1%	Game	3/14		21.4%	
	<b>Free Throws</b>		1st Half		1/4	25.0%	2nd Half		9/17	52.9%	Game	10/21		47.6%	

	SK	BREAT		SK	BREAT		SK	BREAT
Free Throw Pts	9	10	3Pt Points	21	9	Pts/Possession	0.88	0.70
Pts off Turnovers	23	14	2nd Chance Points	9	16	Pts off Bench	5	5
Total Rebounds	34	39	Team Rebounds	7	3	Dead Ball Reb	2	4
Off Rebound %	45.2	51.6	Def Rebound %	48.4	54.8	Total Rebound %	46.6	53.4
3Pt Efficiency	+5.4	-4.7	Def. Stops	36	34	Pts/Shot	0.77	0.79
Technical Fouls	SK		None					
	BREAT		None					
Officials	Steven Ridgeway, Terry Baldwin, Jamie Gatewood							

	Qtr 1	Qtr 2	Qtr 3	Qtr 4	OT 1	OT 2	OT 3	OT 4	Total
Simon Kenton Lady Pioneers	5	11	10	20	0	0	0	0	46
Breathitt County Lady Cats	9	6	13	9	0	0	0	0	37

**Largest Lead** BREAT 37 SK 46 (9 pts) **Lead Changes** 9 **Number of Ties** 12  
**Comments:** None

**FIRST HALF**



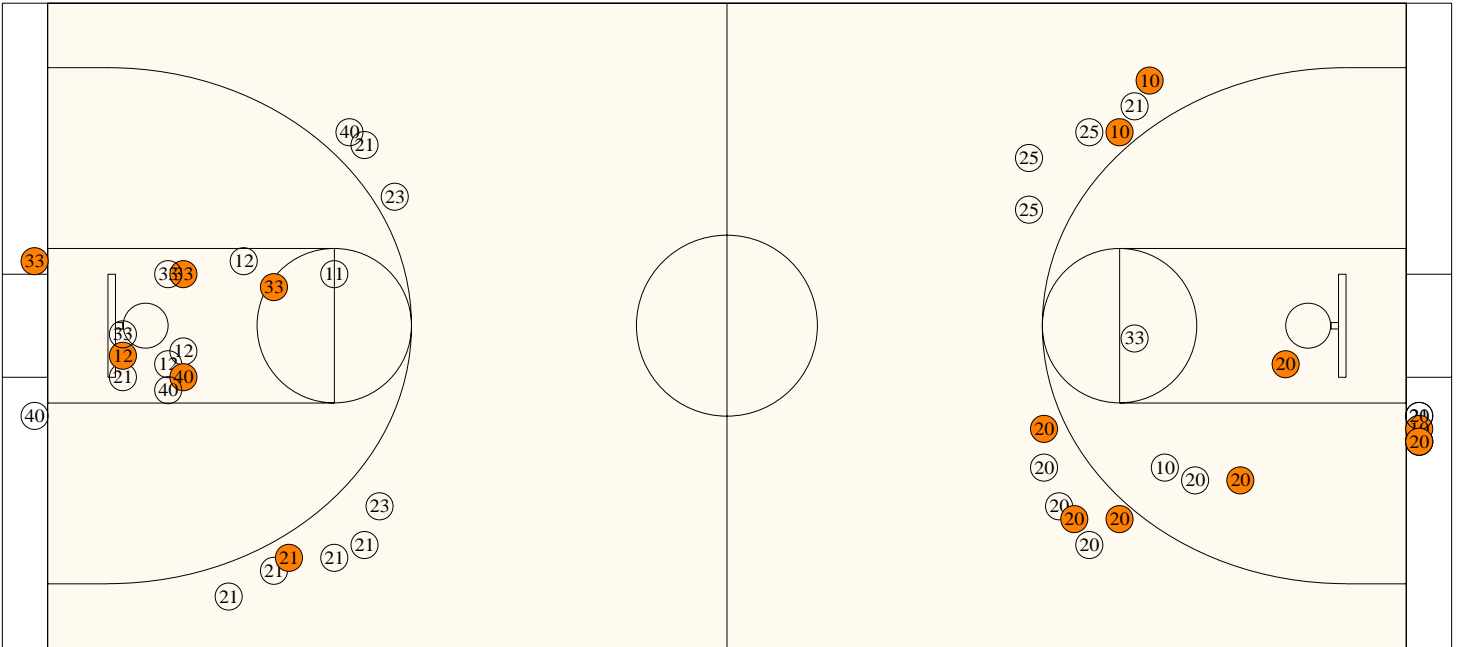
**Breathitt County**

Shooting	Pts	Pts
2FG 4/9 (44.4%)	8	Pts/Shot 0.94
3FG 2/5 (40.0%)	6	2nd Eff Pts 8
TFG 6/14 (42.9%)		Pts off TO's 9
FT 1/4 (25.0%)	1	3Pt Eff +10.4
Scoring Distribution: 2FG 53.3% 3FG 40.0% FT 6.7%		

**Simon Kenton**

Shooting	Pts	Pts
2FG 3/15 (20.0%)	6	Pts/Shot 0.48
3FG 2/15 (13.3%)	6	2nd Eff Pts 6
TFG 5/30 (16.7%)		Pts off TO's 9
FT 4/7 (57.1%)	4	3Pt Eff +0.0
Scoring Distribution: 2FG 37.5% 3FG 37.5% FT 25.0%		

**SECOND HALF**

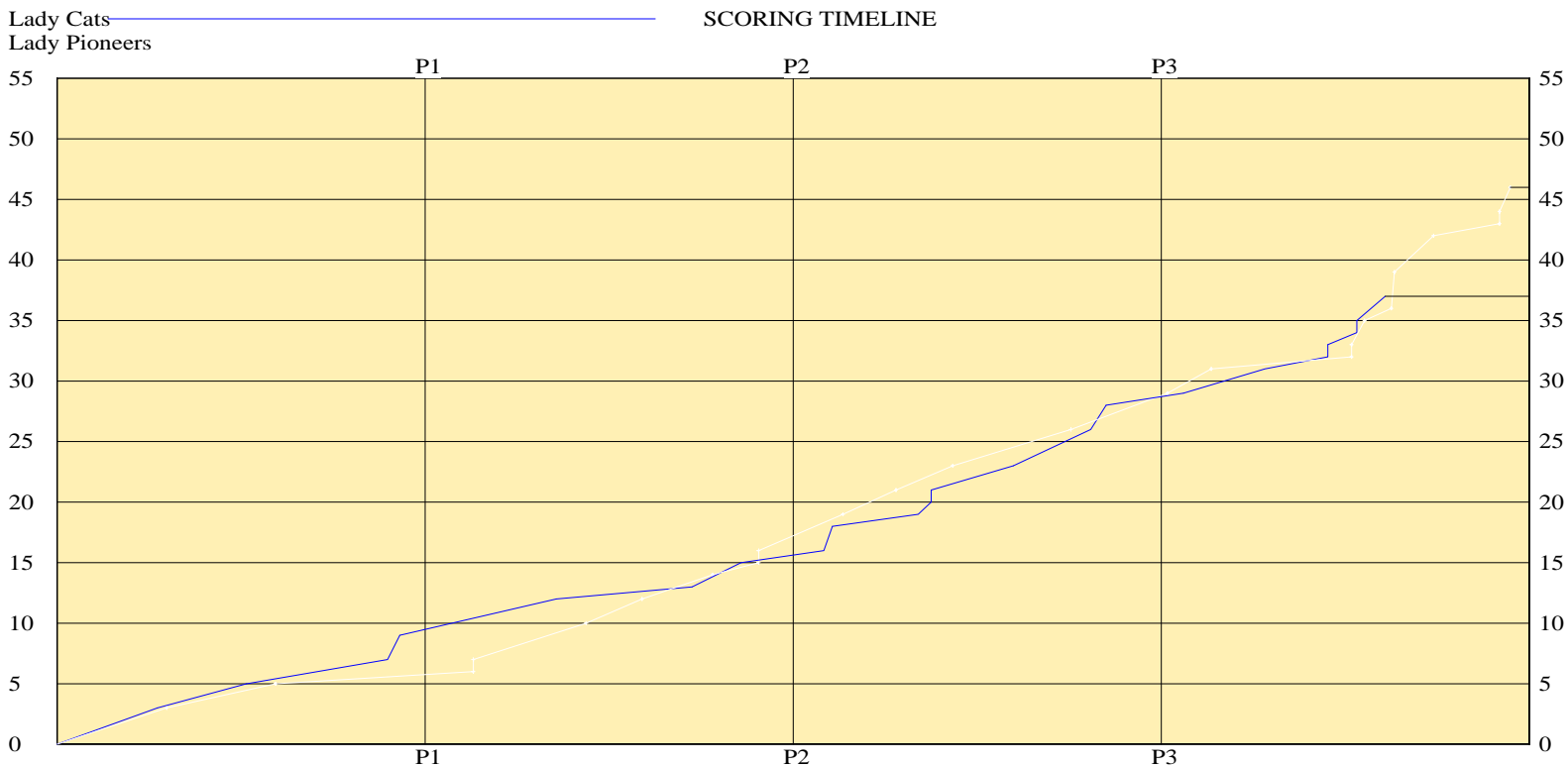
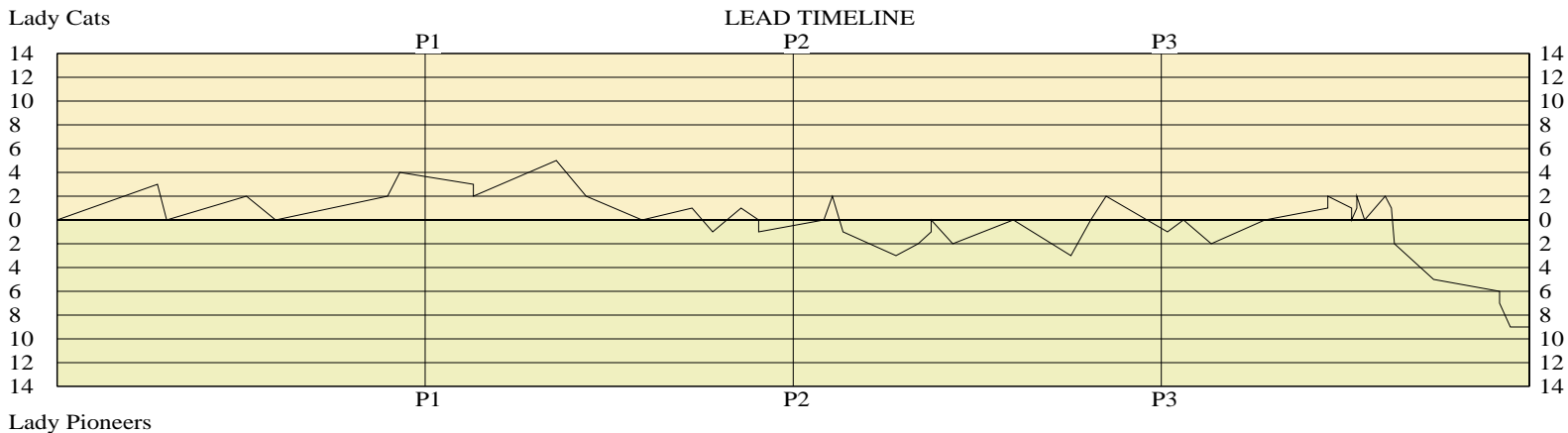


**Breathitt County**

2FG 5/14 (35.7%)	10	Pts/Shot 0.71
3FG 1/9 (11.1%)	3	2nd Eff Pts 8
TFG 6/23 (26.1%)		Pts off TO's 5
FT 9/17 (52.9%)	9	3Pt Eff -12.7
Scoring Distribution: 2FG 45.5% 3FG 13.6% FT 40.9%		

**Simon Kenton**

2FG 5/11 (45.5%)	10	Pts/Shot 1.15
3FG 5/12 (41.7%)	15	2nd Eff Pts 3
TFG 10/23 (43.5%)		Pts off TO's 14
FT 5/7 (71.4%)	5	3Pt Eff +11.4
Scoring Distribution: 2FG 33.3% 3FG 50.0% FT 16.7%		



Largest Lead BREAT 37 SK 46 (9 pts) Lead Changes 9 Number of Ties 12

**KHSAA Basketball - Play by Play Report - Scoring Only (pg 1)**  
**Breathitt County Lady Cats vs. Simon Kenton Lady Pioneers**  
**Date: 03/11/09 Time: 6:30 pm EST Site: Diddle Arena-Bowling Green, KY Attendance: N**

Name	Action	Action	Score	Clock	Diff	Name	Action	Action
B Deaton	3Pt Made	K Noble Assist	3-0	1 5:49	+3 (L1)			
			3-3	1 5:37	(T1)	L Figgins	3Pt Made	K Smith Assist
B Haddix	FG Made	K Noble Assist	5-3	1 3:53	+2			
			5-5	1 3:15	(T2)	K Smith	Putback Made	
B Haddix	FG Made	K Noble Assist	7-5	1 0:49	+2			
V Shouse	Putback Made		9-5	1 0:33	+4			

**End of Period Summary Lady Cats 9 Lady Pioneers 5**

<b>Largest Lead: Lady Cats 9 Lady Pioneers 5 (4 pts)</b>	<b>Lead Changes: 1 Ties: 2</b>
<b>Lead in Period: Lady Cats 9 Lady Pioneers 5 (4 pts)</b>	<b>Lead Changes: 0 Ties: 2 (this period)</b>
<b>7 for 0 oppo pts</b>	<b>Turnovers</b>
<b>1 for 2 pts</b>	<b>2nd Chances</b>
<b>4/6 for 66.7 %</b>	<b>Field Goals</b>
<b>0/0 for 0.00 %</b>	<b>Free Throws</b>
	<b>6 for 9 oppo pts</b>
	<b>6 for 2 pts</b>
	<b>2/13 for 15.4 %</b>
	<b>0/0 for 0.00 %</b>

			9-6	2 6:57	+3	L Figgins	FT Made	
			9-7	2 6:57	+2	L Figgins	FT Made	
B Deaton	3Pt Made	K Noble Assist	12-7	2 5:09	+5			
			12-10	2 4:30	+2	K Smith	3Pt Made	S Wainscott Assist
			12-12	2 3:17	(T3)	L Figgins	Putback Made	
V Shouse	FT Made		13-12	2 2:12	+1			
			13-14	2 1:45	-1 (L2)	C Tolliver	Layup Made	S Wainscott Assist
E Keeton	Putback Made		15-14	2 1:08	+1 (L3)			
K Noble	Personal Foul		15-15	2 0:45	(T4)	N Brown	FT Made	
			15-16	2 0:45	-1 (L4)	N Brown	FT Made	

**End of Period Summary Lady Cats 15 Lady Pioneers 16**

<b>Largest Lead: Lady Cats 12 Lady Pioneers 7 (5 pts)</b>	<b>Lead Changes: 4 Ties: 4</b>
<b>Lead in Period: Lady Cats 12 Lady Pioneers 7 (5 pts)</b>	<b>Lead Changes: 3 Ties: 2 (this period)</b>
<b>5 for 9 oppo pts</b>	<b>Turnovers</b>
<b>4 for 6 pts</b>	<b>2nd Chances</b>
<b>2/8 for 25.0 %</b>	<b>Field Goals</b>
<b>1/4 for 25.0 %</b>	<b>Free Throws</b>
	<b>0 for 0 oppo pts</b>
	<b>10 for 4 pts</b>
	<b>3/17 for 17.6 %</b>
	<b>4/7 for 57.1 %</b>

K Noble	FT Made		16-16	3 7:20	(T5)			
E Keeton	Layup Made	B Hardin Assist	18-16	3 7:09	+2 (L5)			
			18-19	3 6:55	-1 (L6)	C Tolliver	3Pt Made	S Wainscott Assist
			18-21	3 5:46	-3	C Tolliver	FG Made	
K Noble	FT Made		19-21	3 5:17	-2			
K Noble	FT Made		20-21	3 5:00	-1	A Ponzer	Personal Foul	
K Noble	FT Made		21-21	3 5:00	(T6)			
			21-23	3 4:32	-2	C Tolliver	Layup Made	L Figgins Assist
E Keeton	FG Made	K Noble Assist	23-23	3 3:13	(T7)			
			23-26	3 1:58	-3	C Tolliver	3Pt Made	
B Deaton	3Pt Made	K Noble Assist	26-26	3 1:32	(T8)			
K Noble	Putback Made		28-26	3 1:12	+2 (L7)			

**End of Period Summary Lady Cats 28 Lady Pioneers 26**

<b>Largest Lead: Lady Cats 12 Lady Pioneers 7 (5 pts)</b>	<b>Lead Changes: 7 Ties: 8</b>
<b>Lead in Period: Lady Cats 18 Lady Pioneers 21 (3 pts)</b>	<b>Lead Changes: 2 Ties: 4 (this period)</b>
<b>5 for 7 oppo pts</b>	<b>Turnovers</b>
	<b>3 for 5 oppo pts</b>

KHSAA Basketball - Play by Play Report - Scoring Only (pg 2)

Breathitt County Lady Cats vs. Simon Kenton Lady Pioneers

Date: 03/11/09 Time: 6:30 pm EST Site: Diddle Arena-Bowling Green, KY Attendance: N

Name	Action	Action	Score	Clock	Diff	Name	Action	Action
	<b>6 for 5 pts</b>						<b>0 for 0 pts</b>	
	<b>4/13 for 30.8 %</b>						<b>4/11 for 36.4 %</b>	
	<b>4/6 for 66.7 %</b>						<b>0/0 for 0.00 %</b>	
			28-29	4	7:52	-1 (L8)	C Tolliver	3Pt Made
K Noble	FT Made		29-29	4	7:31	(T9)		S Wainscott Assist
			29-31	4	6:55	-2	S Wainscott	Layup Made
E Keeton	FG Made	V Shouse Assist	31-31	4	5:45	(T10)		
K Noble	FT Made		32-31	4	4:23	+1 (L9)	C Tolliver	Personal Foul
K Noble	FT Made		33-31	4	4:23	+2		
E Keeton	Personal Foul		33-32	4	3:52	+1	N Brown	FT Made
			33-33	4	3:52	(T11)	N Brown	FT Made
K Noble	FT Made		34-33	4	3:45	+1	C Tolliver	Personal Foul
K Noble	FT Made		35-33	4	3:45	+2		
			35-35	4	3:35	(T12)	C Tolliver	FG Made
V Shouse	FG Made		37-35	4	3:08	+2		
E Keeton	Personal Foul		37-36	4	3:00	+1	N Brown	FT Made
			37-39	4	2:56	-2 (L10)	S Wainscott	3Pt Made
			37-42	4	2:05	-5	S Wainscott	3Pt Made
			37-43	4	0:39	-6	L Figgins	FT Made
			37-44	4	0:39	-7	L Figgins	FT Made
			37-46	4	0:25	-9	C Tolliver	Layup Made

End of Period Summary Lady Cats 37 Lady Pioneers 46

Largest Lead: Lady Cats 37 Lady Pioneers 46 (9 pts)

Lead in Period: Lady Cats 37 Lady Pioneers 46 (9 pts)

4 for 7 oppo pts

5 for 3 pts

2/10 for 20.0 %

5/11 for 45.5 %

Turnovers

2nd Chances

Field Goals

Free Throws

Lead Changes: 10 Ties: 12

Lead Changes: 2 Ties: 4 (this period)

2 for 0 oppo pts

3 for 3 pts

6/12 for 50.0 %

5/7 for 71.4 %

**OFFICIAL BASKETBALL BOX SCORE**  
Simon Kenton Lady Pioneers vs Breathitt County Lady Cats

03/11/09 6:30 pm EST  
Final Box Score

Diddle Arena  
Bowling Green, KY

No.	Simon Kenton Lady Pioneers	Total FG		3-point		Free throw		Rebounds			F	TP	A	TO	BLK	STL	MIN
		FG	FGA	FG	FGA	FT	FTA	Off	Def	Tot							
10	Sydni Wainscott	3	9	2	5	0	1	2	1	3	2	8	4	7	0	4	32:00
11	Aris Kuntz	0	0	0	0	0	0	0	0	0	0	0	0	0	0	0	DNP
15	Teresa Large	0	0	0	0	0	0	0	0	0	0	0	0	0	0	0	DNP
20	Chelsea Tolliver	8	23	3	11	0	0	2	4	6	5	19	0	1	0	1	31:42
21	Ali Ponzer	0	6	0	4	0	0	1	0	1	5	0	0	2	0	1	18:58
25	Lyndsey Figgins	2	8	1	5	4	7	3	4	7	1	9	1	1	0	1	27:33
33	Kayla Smith	2	5	1	2	0	0	3	5	8	4	5	1	0	1	2	26:43
44	Nikki Brown	0	2	0	0	5	6	2	0	2	3	5	1	0	1	1	16:36
24	Olivia Bach	0	0	0	0	0	0	0	0	0	0	0	0	0	0	0	4:25
31	Caitlyn Figgins	0	0	0	0	0	0	0	0	0	0	0	0	0	0	1	2:03
22	Natalie Wainscott	0	0	0	0	0	0	0	0	0	0	0	0	0	0	0	DNP
23	Hannah Stephenson	0	0	0	0	0	0	0	0	0	0	0	0	0	0	0	DNP
30	Kristin Pace	0	0	0	0	0	0	0	0	0	0	0	0	0	0	0	DNP
32	Brionna Jones	0	0	0	0	0	0	0	0	0	0	0	0	0	0	0	DNP
<b>Team (Included in Totals)</b>								<b>6</b>	<b>1</b>	<b>7</b>							
<b>Totals</b>		<b>15</b>	<b>53</b>	<b>7</b>	<b>27</b>	<b>9</b>	<b>14</b>	<b>19</b>	<b>15</b>	<b>34</b>	<b>20</b>	<b>46</b>	<b>7</b>	<b>11</b>	<b>2</b>	<b>11</b>	<b>160</b>
Total FG%: 1st half 5 - 30 (16.7%)		2nd half 10 - 23 (43.5%)		Game 15 - 53 (28.3%)		Deadball											
3Pt FG%: 1st half 2 - 15 (13.3%)		2nd half 5 - 12 (41.7%)		Game 7 - 27 (25.9%)		rebounds											
FT%: 1st half 4 - 7 (57.1%)		2nd half 5 - 7 (71.4%)		Game 9 - 14 (64.3%)		2											
No.	Breathitt County Lady Cats	Total FG		3-point		Free throw		Rebounds			F	TP	A	TO	BLK	STL	MIN
		FG	FGA	FG	FGA	FT	FTA	Off	Def	Tot							
4	Leslie Spencer	0	0	0	0	0	0	0	0	0	0	0	0	0	0	0	DNP
5	Ashley White	0	0	0	0	0	0	0	0	0	0	0	0	0	0	0	DNP
11	Brittany Haddix	2	5	0	0	0	0	0	3	3	4	4	0	6	1	1	25:22
12	Kendall Noble	1	4	0	0	9	16	6	6	12	3	11	6	6	2	3	32:00
21	Brianna Deaton	3	12	3	11	0	0	1	0	1	0	9	0	3	0	0	24:33
33	Eden Keeton	4	6	0	0	0	1	3	5	8	3	8	0	0	3	0	31:12
30	Brittany Hardin	0	0	0	0	0	0	1	3	4	2	0	1	3	0	1	16:46
23	Kristin Bowen	0	2	0	2	0	2	0	0	0	0	0	0	1	1	0	15:10
40	Victoria Shouse	2	8	0	1	1	2	4	4	8	1	5	1	2	0	0	14:57
32	Courtney Fugate	0	0	0	0	0	0	0	0	0	0	0	0	0	0	0	DNP
34	Morgan Robinson	0	0	0	0	0	0	0	0	0	0	0	0	0	0	0	DNP
42	Emily White	0	0	0	0	0	0	0	0	0	0	0	0	0	0	0	DNP
53	Katlyn Turner	0	0	0	0	0	0	0	0	0	0	0	0	0	0	0	DNP
54	Amber Gross	0	0	0	0	0	0	0	0	0	0	0	0	0	0	0	DNP
<b>Team (Included in Totals)</b>								<b>1</b>	<b>2</b>	<b>3</b>							
<b>Totals</b>		<b>12</b>	<b>37</b>	<b>3</b>	<b>14</b>	<b>10</b>	<b>21</b>	<b>16</b>	<b>23</b>	<b>39</b>	<b>13</b>	<b>37</b>	<b>8</b>	<b>21</b>	<b>7</b>	<b>5</b>	<b>160</b>
Total FG%: 1st half 6 - 14 (42.9%)		2nd half 6 - 23 (26.1%)		Game 12 - 37 (32.4%)		Deadball											
3Pt FG%: 1st half 2 - 5 (40.0%)		2nd half 1 - 9 (11.1%)		Game 3 - 14 (21.4%)		rebounds											
FT%: 1st half 1 - 4 (25.0%)		2nd half 9 - 17 (52.9%)		Game 10 - 21 (47.6%)		4											

Technical Fouls: None

Attendance: N

Officials: Steven Ridgeway, Terry Baldwin, Jamie Gatewood

Score by Period	1st	2nd	3rd	4th	Final	Record	Overall	Conf
Simon Kenton Lady Pioneers	5	11	10	20	46	Lady Pioneers		
Breathitt County Lady Cats	9	6	13	9	37	Lady Cats		

Lady Cats Lady Pioneers	
Points off Turnovers	14 23
Points in the Paint	10 12
3pt Efficiency	-4.7 +5.4
Largest Lead	37 46

Lady Cats Lady Pioneers	
Second Effort Points	16 9
3 Point Points	9 21
Points/Shot	0.79 0.77
Lead Changes	9

Lady Cats Lady Pioneers	
Bench Points	5 5
Free Throw Points	10 9
Defensive Stops	34 36
Number of Ties	12

Game comments: None